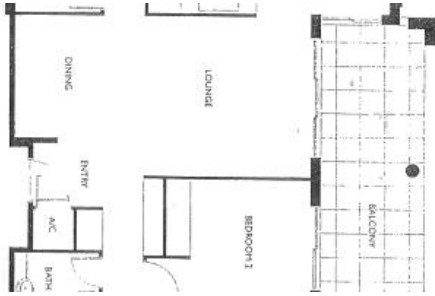




2 Gas Works Road, Wollstonecraft



Harbourside Estate

***** CONTRACT EXCHANGED *****

On the 8th Floor of the HOYA Building in the WONDAKIAH. This spacious 2 Bedroom apartment features a open plan living area that flows seamlessly to a large entertaining terraces with views to Wollstonecraft Bay, Berry Island Reserve, Pictorial landscaped gardens & Beyond. 2 double bedrooms, main with walk in robes and ensuite. Ducted air-con, stainless steel gas cook top, 2 under cover car park. C- bus smart electronics system. Min to Waverton train stations. 4 tennis courts, 3 swimming pools, Gym, sauna and spa. Access to Marina berth.

*Internal area 125M2 plus 2car park 28m2 total area of the lot 153M2

Strata Levies: \$2258.45 p.qtr

Water: \$143 p.qtr

Council: \$180 p.qtr

WILSON KING 0412 88 99 11 / wilsking@gmail.com

2 Beds 2 Baths 3 Car 153m2

Price	SOLD
Property Type	Residential
Property ID	791
Land Area	153 m2
Floor Area	120.77 m2

Agent Details

WILSON KING - 0412889911

Office Details

Home Unit Headquarters
Unit 2 38 Alfred St S Milsons Point
NSW 2061 Australia
02 9955 3311



The above information provided has been furnished to us by the vendor/s. We have not verified whether or not that information is accurate and do not have any belief in one way or the other in its accuracy. We do not accept any responsibility to any person for its accuracy and do no more than pass it on. All interested parties should make and rely upon their own inquiries in order to determine whether or not this information is in fact accurate.